

2

Requirements and Installation



Basic Requirements

Minimum Hardware Requirements:

- ◆ Pentium PC 200 MHZ or faster IBM or compatible, with 128 MB of RAM and at least 200 MB of hard disk space free. (This includes requirements for translator and files)
** Be sure to also have at least 50MB for Windows swap space on your PC.
- ◆ Resolution of at least 640x480, best mode is 600x800.

Software Requirements:

- ◆ Windows 95, 98, 2000 or Windows N/T Workstation
- ◆ ACCPAC Windows Integration
 - * Order Entry v4.1 or greater
 - * Accounts Receivable v4.1 or greater
 - * Inventory Control v4.1

Communications:

- ◆ **MODEM**
- ◆ An external or internal asynchronous or (bi-synchronous used for Walmart) modem
- ◆ **TRANSLATOR**
You require an EDI translator with mapping capabilities. EDI-PAC/2000 works with any translator that can output a user definable ASCII file (this means it has mapping capabilities). The ASCII file layout required by EDI-PAC/2000 for imported and exported files, is provided in the EDI-PAC/2000 manual, and on the product CD. Recommended translators include Pro_EDI, EDS Asset, Trading Partner PC, and Gentran for Windows. Inquire about your chosen translator.

- ◆ **VALUE ADDED NETWORK (VAN)**
Value Added Network (VAN) is required to communicate with your trading partners, and access your network mailbox ID. Some translators include communication software that is pre-set to communicate through some VAN's. Your trading partner may recommend a particular VAN, examples include AT&T, IBM, GEIS, and Sterling. Check your VAN or trading partner in case of special modem requirements.



Crystal Reports Users:

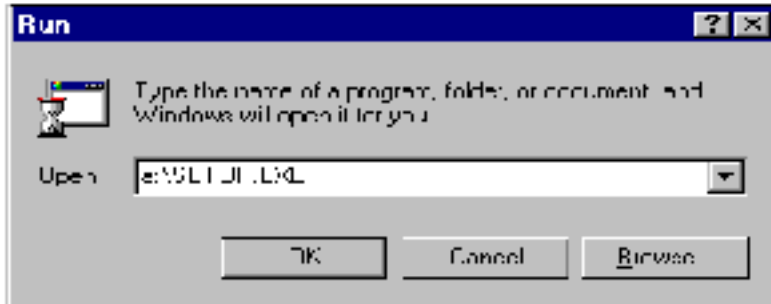
If you currently use Crystal Reports from Seagate Software, you must be at version 6.0 or higher of the program. EDI-PAC/2000 uses Crystal Reports for report printing and it will install program libraries that could conflict with another version of Crystal Reports.

Product Installation

EDI-PAC/2000 comes on a CD-ROM for installation.

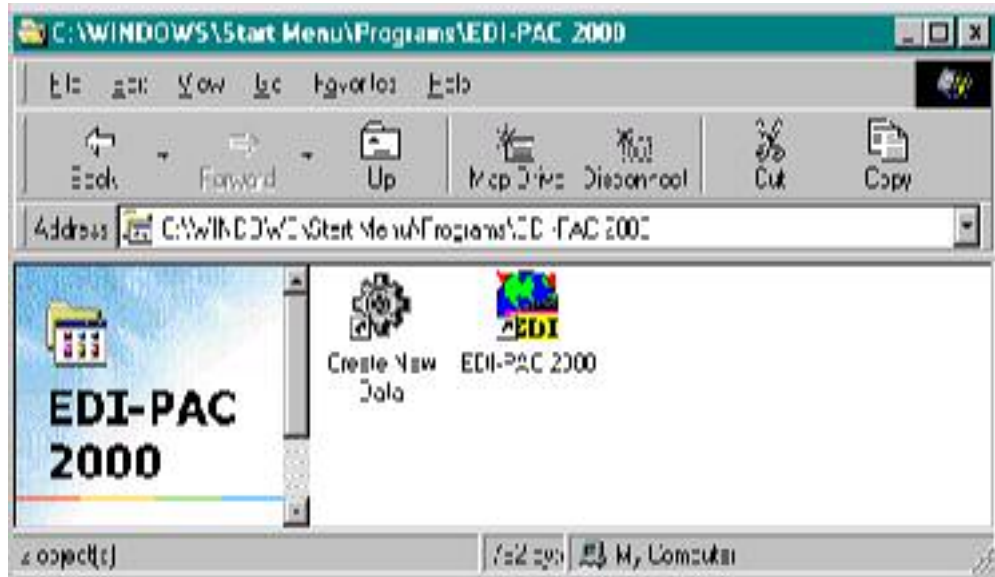
CD-ROM Installation

- ◆ Insert the EDI-PAC/2000 CD-ROM into your drive.
- ◆ Using your Windows 95 or NT system, install the program using the **RUN** E:\SETUP.EXE command. This assumes your CD-ROM drive is called E:. Then simply follow the screen messages.



EDI-PAC/2000 uses Crystal Reports components. If you use Crystal Report Writer, be sure you have version 6.0 or higher.

When EDI-PAC/2000 is installed on your computer, a product group called EDI-PAC/2000 is created with two icons.



EDI-PAC/2000 - Used to start the product. The first time you go into it, it will contain sample data for your use. Once you wish to create your own data, you must access the next icon. **DO NOT modify the sample data to be your own.**

Create new data - You must use this option to initialize a live database. This program must be run before live company data is created, and before the product is registered with BSG.



Once you create your permanent files, sample data is no longer available for your use. EDI-PAC/2000 will only support one set of data per serial number.

Uninstall - This is done using the Windows un-install function accessed from the Control Panel, Add/Remove Programs.

2 - 4 Requirements and Installation

Using Sample Data

The installation process will automatically install sample data so you can use and learn EDI-PAC/2000.

It provides data so that the various features and reports in the product can be seen. Once you are ready to create your live company data, use the “**Create New Data**” icon in the EDI-PAC/2000 Program Group.



Once you create your permanent files, sample data is no longer available for use. EDI-PAC/2000 will only support one set of data per serial number.

Product Registration

EDI-PAC/2000 comes with a serial number printed on the product box and on the back of the manual.

When the product starts up for the first time, a dialog box is displayed requesting you to enter the serial number.

Once the product serial number is entered, you have **30 days to register** the product and your company with Bravo Software Group. This allows us to keep you up-to-date on new versions, product add-ons and additional remote sites. The registration also confirms your purchase (it can no longer be returned), and acceptance of the licencing agreement for the software.

You can **proceed** into the system **without** your **Registration Number**. Please remember, it may take a couple of days to generate your number, so it is recommended you don't wait too close to the 30 day registration deadline as your system will not continue once this deadline has been reached.

Registration:

The registration screen can be accessed by clicking on the EDI-PAC/2000 button **Log on** sign on screen, or by selecting **Registration** from the **Help** drop down

Fill in all fields on this form to help us know about your company, and once completed, you can **E-Mail** the registration form to us via the Internet, you can **Print** the form and then fax it to us, or **Save** the form as a file that can later be E-Mailed as an attachment.

Once BSG receives your registration form, we will send you a **Registration Number** that must be entered into this form.

Menus and Navigating in EDI-PAC/2000

EDI-PAC/2000 Menu Bars

When the program starts up, it has a main menu bar that appears on the left hand side of the screen. The menu bar “floats” so it can be moved anywhere on the screen. You can move the menu bar by positioning your mouse pointer at the top end of the menu bar between the button and the edge, and then holding down the left mouse button as you drag your mouse around the screen the menu bar follows.

EDI-PAC/2000 Menu Options



- Orders
- Document Query
- Communications



- Orders
- Invoices
- Credit Notes
- Document Query
- Communications



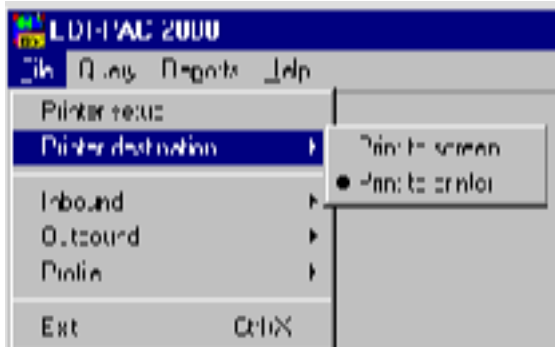
- Inbound Audit
- Outbound Audit
- Error List



- Company Profile
- Customer / Ship-To Translations
- Customer / Term Translations

Drop Down Menu Bar File Options

This is simply an alternate way to get at the functions, instead of using the menu bars and your mouse

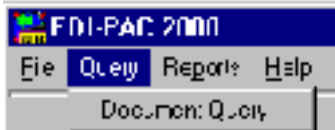


The drop down menu bar appears at the top of the EDI-PAC/2000 active window. You can access all of the EDI-PAC/2000 functions either from the drop down menus or from the “floating” menu bars. In addition to the main menu options, the following are also available;

- ◆ **Printer Setup -** This provides a dialogue box to set your printer type. It is a standard Windows print box to select either the default Windows printer or a special printer. You can also configure printer options from here. You only need to set it once before printing in EDI-PAC/2000.
- ◆ **Report Destinations -** You can set the default print destination(s) for all printed reports in EDI-PAC/2000. The reports can be sent to the **Screen** or **Printer**. Just click on or click off each of the two choices. When you print to the screen you also have the ability to later send to the printer from the print form.

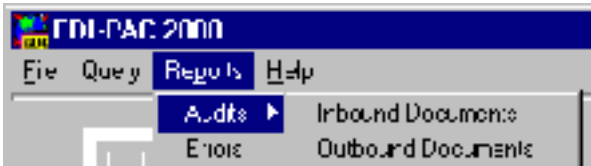
- ◆ **Inbound-** The **Inbound** choice provides access to all inbound processing and inbound communications.
- ◆ **Outbound -** The **outbound** option allows access to all outbound transaction processing and outbound communications.
- ◆ **Profile -** The **profile** option allows access to company profile, customer ship-to maintenance and customer item maintenance.

Drop Down Menu Bar - Query Option



This option allows access to a **Document Query** program that searches on the EDI-PAC historical document files for all activity.

Drop Down Menu Bar - Reports



The **Reports** drop down menu provides an alternate way to access the **Inbound and Outbound Documents** printing of **Audit** reports. It also allows you to access the Errors File.

Drop Down Menu Bar - Help



This menu choice provides access to various help screens in EDI-PAC/2000. It is worth your while to view each of these options so that you can see the type of information that is online and may be useful in the future.

- ◆ **Contents** - provides an outline of the program help.
- ◆ **Product Support** - outlines how to get technical support on the product.
- ◆ **Registration** - invokes the EDI-PAC/2000 registration form which allows you to register the product with BSG and register additional remote licences.
- ◆ **About** - This gives a brief description of Bravo Software Group.